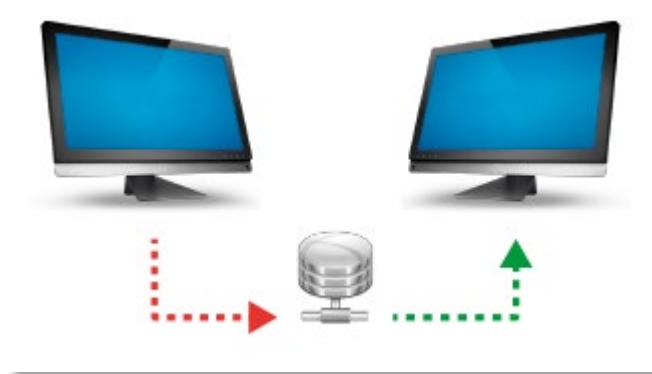




USMTGUI - Guide for backup and restore of local, Domain and Azure user profiles



Easy transfer of User Profiles from one PC to another. Or directly to Azure user.
Save data to USB hard disk or network and restore to the new PC

In this guide, you will see how simple it is to migrate user profiles. On pages 3-7 you get a quick overview of the main functions:

1. Migration From one computer to another (Use USMTGUI offline to back up from XP/Vista.)
2. From one Windows *version* to another
3. From one Domain to another (or local to Domain or to Azure Profile – Corp editions)
4. And even from one username to another (local, Domain and Azure – Corp editions).

NOTE: Domain and Azure user profile migrations are only available in the Corporate Editions

USMTGUI will NOT however be able to back up a broken profile. This hence normally when the profile is broken, the Ntuser.dat file is just that – broken. Then Profile backup is not possible!

What does USMT backup then?

To see specifically what USMT does back up please see [Microsofts USMT reference for USMT](#):

Note: The local migration feature of USMTGUI, for migration of a profile on the same PC *directly* to another local, Domain or Azure user on that same PC is not using USMT but the EhlerTech ©AzureMigrationEngine..



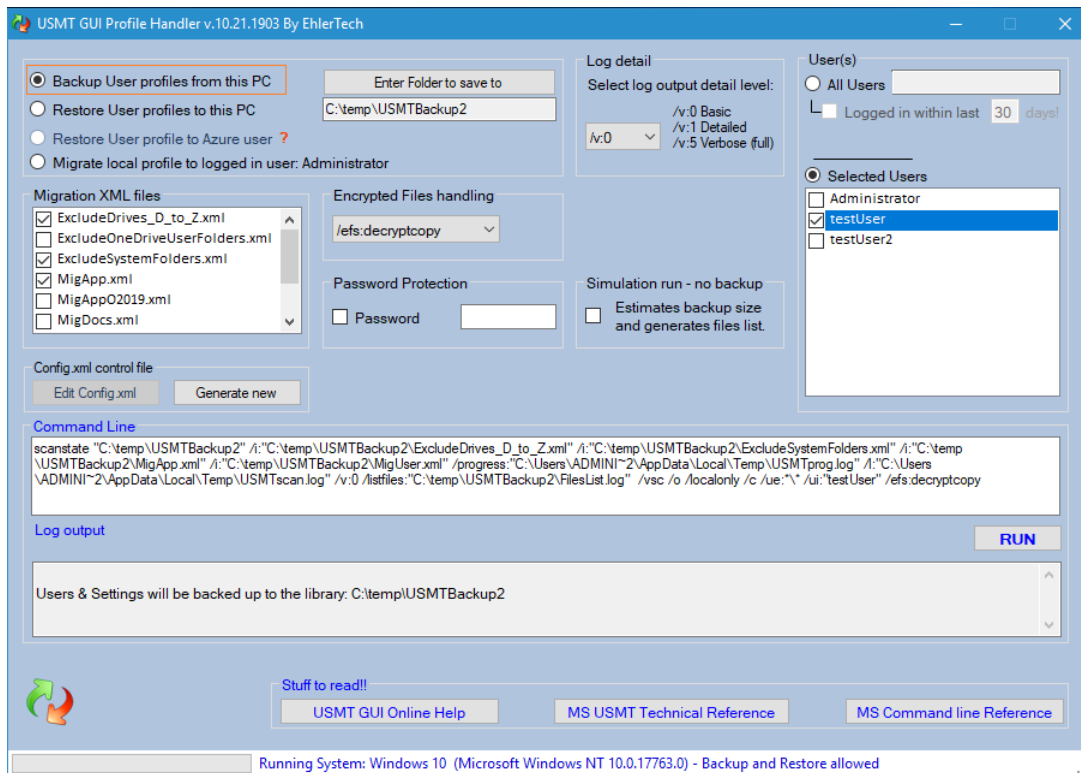
Table of Contents

USMTGUI - Guide for backup and restore of local, Domain and Azure user profiles	1
1. Create a User profile backup	3
Backup Errors.....	3
2. Restore a User profile	4
Restore Errors.....	4
2a. Restore a user profile to other user/other Domain	5
Restore Errors.....	5
3. Restore a user profile to the Currently logged in AzureAD user	6
4. Migrate a local user profile to the Currently logged in user (Azure or other)	7
Azure Migration default settings	8
Save data to, and restore from, network share	9
Log file locations.....	10
Silent install	10
Silent install	10
USMTGUI Offline User guide (Optional, Only with Pro and Corp versions!!)	11
Uses of USMTGUI Offline.....	11
User Profile backup from Windows.Old “Upgrade- Install” folder.....	11
User Profile Backup off hard disk from old or Dead Pc	11
User Profile Backup off hard disk with Boot ISO	11
Errors	11
USMTGUI Offline User Guide	12
USMTGUI St. Alone Corporate Automatization functionality	13
Default selected XML files - USMTGUI St. Alone.exe – and USMTGUI St. Alone.Zip	14
Preselected XML’s	14
EhlerTech Reference XML files walk through.....	15
Short descriptions of each xml file	15
Detailed description of each XML file and (some) modifications that can be made: see separate guide.	15



1. Create a User profile backup

1. Preferably Logon as the local Administrator and start USMTGUI.
2. Select where to store data. - When storing to a network location please see the chapter *“Save data to, and restore from, network share..”*
3. Select which users you want to backup
4. Click “RUN” and wait for the Process to finish



Password: You CAN set a password without blanks. But don't forget it. There is no recovery method !!

Backup Errors

In the event you get any errors, that you do not completely understand, please send the log files and we will figure out where the problem lies.

LOGS:

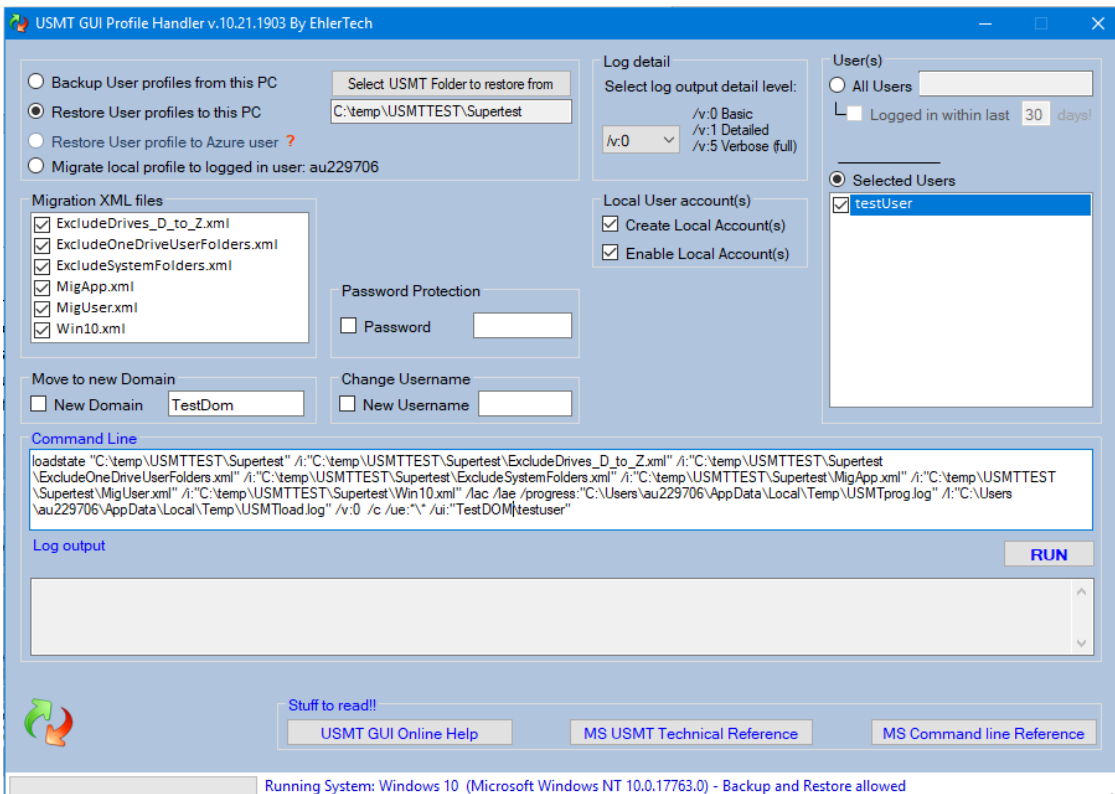
To locate the USMT log files please just open File Explorer and browse to the location where you chose to store your backup or where the backup you tried to restore is residing.

Copy all log files starting with “USMT” and send them to us at thomas@ehler.dk



2. Restore a User profile

1. Preferably Logon as the local Administrator and start the interface.
2. Point to where you stored data. - When restoring from a network location please see chapter "Save data to, and restore from, network share.."
3. Select which users you want to Restore
4. Click "RUN" and wait for the Process to finish



Restore Errors

In the event you get any errors, that you do not completely understand, please send the log files and we will figure out where the problem lies.

LOGS:

To locate the USMT log files please just open File Explorer and browse to the location where you chose to store your backup or where the backup you tried to restore is residing.

Copy all log files starting with "USMT" and send them to us at thomas@ehler.dk

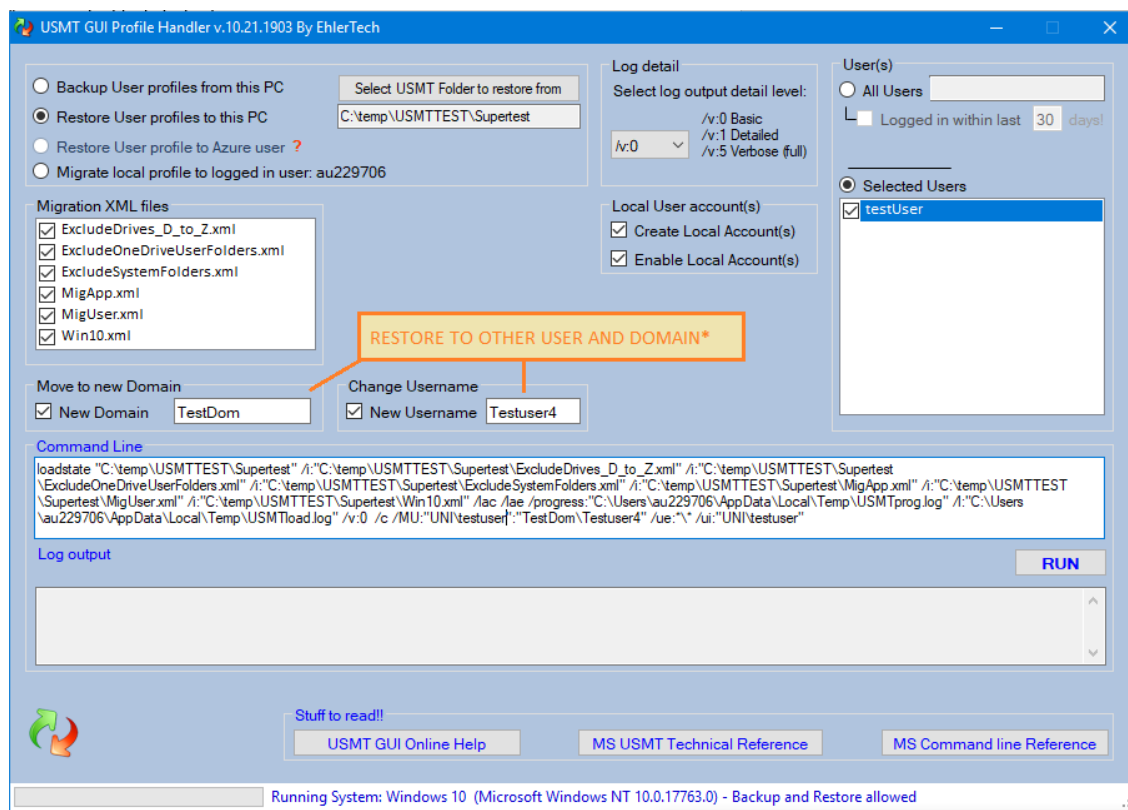
NOTES:

- IF restoring to a **Local account** that already exists on the Pc, please deselect the switches "Create User Account(s)" and Enable User Account(s)"
- IF restoring to a **Domain account**, please make sure the account IS present on the Domain but has **not** logged in locally on the PC you restore to. In case the user already did login on that PC, please delete the users profile locally prior to restoring, through "Advanced System Settings".
- When logging into a new restored *local profile*, you will be prompted to change password. Please note that the "current" password is blank. Just set a new one.



2a. Restore a user profile to other user/other Domain

When restoring a user to a new user name, or users to another domain, use the following selections



* The “Move to new Domain” is supported in USMTGUI Corporate versions only, and only visible on Domain joined PC’s.

Also, the “New Username” is only available when only one user is selected in the “Selected Users” box.

Restore Errors

In the event you get any errors, that you do not completely understand, please send the log files and we will figure out where the problem lies.

To locate the USMT log files please locate your storage location (See chapter “Log file locations”)

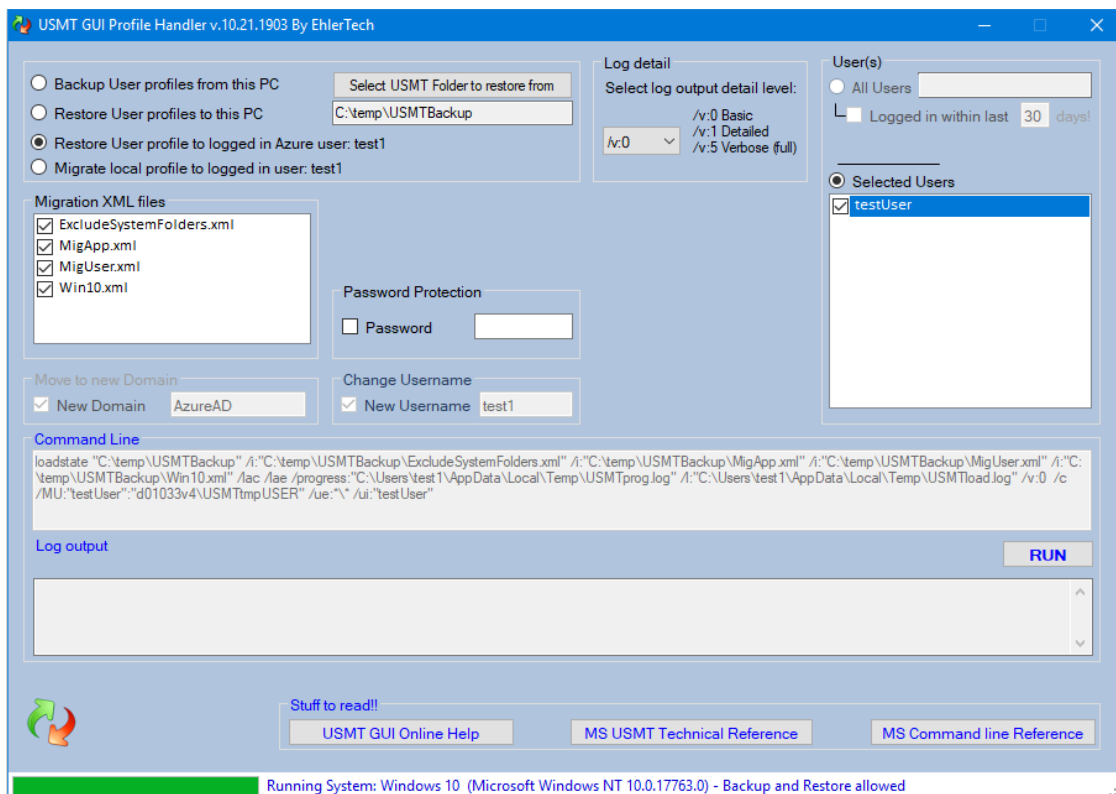
NOTES:

- IF restoring to a **Local account** that already exists on the Pc, please deselect the switches “Create User Account(s)” and Enable User Account(s)”
- IF restoring to a **Domain account**, please make sure the account IS present on the Domain but has **not** logged in locally on the PC you restore to. In case the user already did login on that PC, to avoid locked files please delete the users profile locally prior to restoring, through “Advanced System Settings”.



3. Restore a user profile to the Currently logged in AzureAD user

1. Logon as the AzureAD user you want to restore to and start the USMTGUI interface.
- See below how to join the PC to AzureAD.
2. Point to where you stored data. - When restoring from a network location please see chapter "Save data to, and restore from, network share.."
3. Select which user profile you want to migrate over to the currently logged in user.
4. Click "RUN" and wait for the Process to finish



It is **mandatory** in this function that the currently logged in user have **Local Administrator** privileges!

The **AzureAD** user joining a PC to Azure, automatically becomes Local Administrator.

- To set the user, you want to restore to, as member of Local Administrators, Login with the local Administrator and run the command:

```
net localgroup administrators AzureAD\username /add
```

Then log back in with the user and retry the restore

Joining a PC to AzureAD

To move an existing local or Domain PC to Azure and migrate the local users Profile to the new AzureAD profile, please do the following

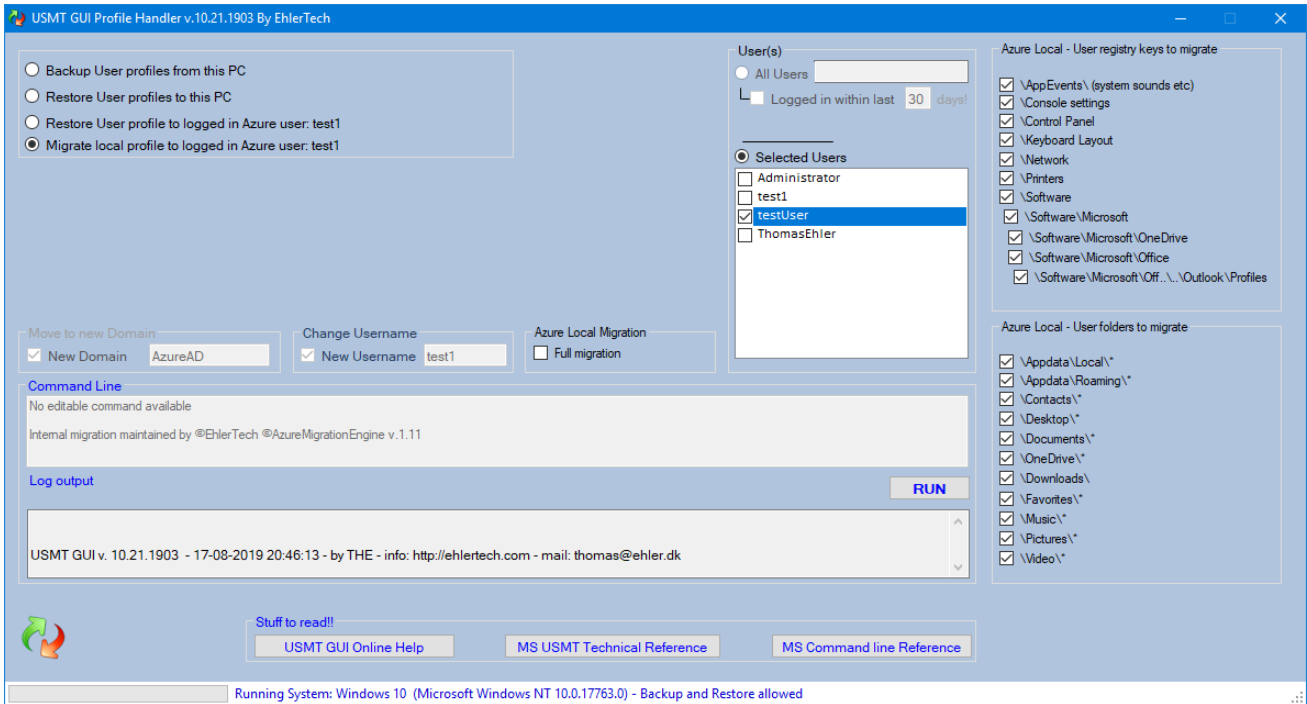
1. If the PC is Domain joined, open "Settings", "Accounts", "Access work or school" and disconnect.
2. Restart and logon with the Local Administrator
3. Then join the PC to your AzureAD through "Settings", "Accounts", "Access work or school"
4. Click "Connect" and select "Join this device to Azure Active Directory"
 - Please Join with the AzureAD user that will be using the PC, to ensure local Administrative rights. Login with the users AzureAD account and go through PIN setup etc. (if you use it..)



4. Migrate a local user profile to the Currently logged in user (Azure or other)

Note: This feature is for side-by side migrations, locally on the PC, only!

1. Logon as the AzureAD, or other, user you want to migrate to and start the USMTGUI interface.
- See on previous page how to join the PC to AzureAD.
1. A list of local profiles on the PC are listed
2. Select which user profile you want to migrate over to the currently logged in user
3. Click "RUN" and wait for the Process to finish



It is **mandatory** in this function that the currently logged in user have **Local Administrator** privileges!

The **AzureAD** user joining a PC to Azure, automatically becomes Local Administrator.

- To set the user, you want to restore to, as member of Local Administrators, Login with the local Administrator and run the command:

```
net localgroup administrators AzureAD\username /add
```

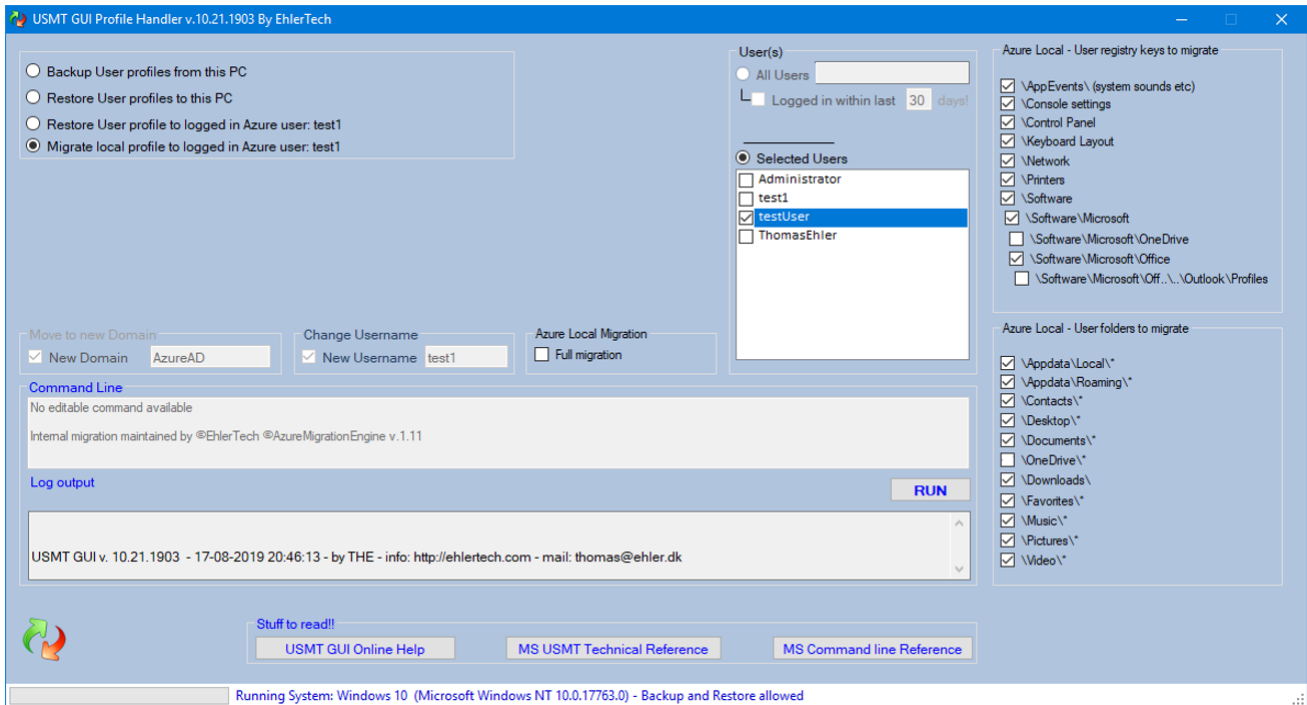
Then log back in with the user and retry the migration



Azure Migration default settings

When migrating from a Domain or local profile to Azure you don't always want to move over everything! For instance if you go from one mail setup on the On-prem Domain to another on Azure you will prefer to omit migration of Outlook files and settings.

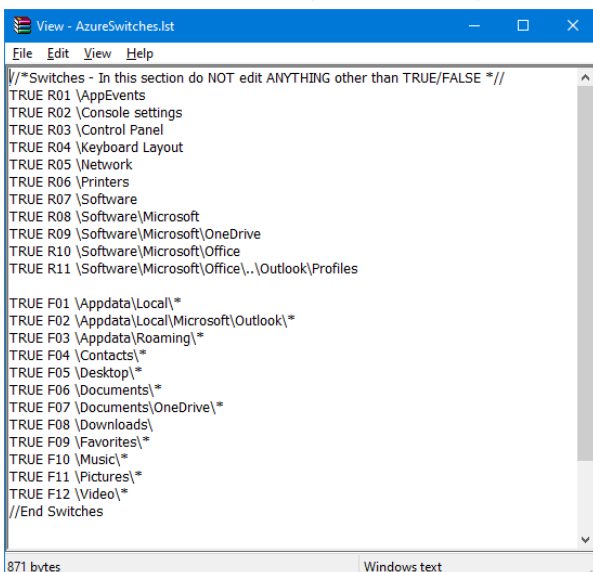
And if you used Onedrive on the Domain but with different user/credentials..



To set the wanted settings you can pry open *USMT GUI 11 St.Alone EntC.exe* using for instance WinRAR, and extract the file *AzureSwitches.lst*

Edit *AzureSwitches.lst* and ONLY change **TRUE** to **FALSE** in the corresponding lines. Nothing else!

Note: The bottom section, Exclude Files, Exclude folders is not currently operational.



After editing the *AzureSwitches.lst* file, save it and drag it into *USMT GUI 11 St.Alone EntC.exe* while opened in WinRAR. Accept to add the file and close WinRAR



Save data to, and restore from, network share

To get the logic in why this is an issue you must first understand a little more about what really goes on when you run USMT GUI.

USMT is a command line tool from Microsoft. USMT GUI just simplifies the use, since USMT is a highly technical tool to run by hand.

So what USMTGUI actually does, is setup a command line for USMT, run it, and monitor that everything goes well. To be able to access all the selected users data, USMT **must** run in an Elevated Command Prompt and USMTGUI does that for you..

So far so good... ???

Well here comes the culprit regarding storing on a network share.

When/if you, as another user than **Local Administrator** select a network share to save to, you do it with the rights belonging to that user. However, USMT runs in the Elevated Command Prompt and that does NOT have access to the users mounted drive letters.

Solution:

1. Store locally and move the data after
2. Logon as *the* **Local Administrator** and map the drive with credentials before running USMT GUI.
3. Open a command prompt with "Run as Administrator" and map the Network location by hand before running USMT GUI.
4. Use an UPC path (you know: [\\server](#)FQDN\share)



Log file locations

To locate the USMT log files please just open File Explorer and browse to the location where you chose to store your backup or where the backup you tried to restore is residing.

Copy all log files starting with "USMT" and send them to us at thomas@ehler.dk

Silent install

Silent install

"USMTGUI 10.exe" /quiet

"USMTGUI 10 Pro.exe" /quiet

"USMTGUI 10 Pro Corp.exe" /quiet



USMTGUI Offline User guide (Optional, Only with Pro and Corp versions!!)

Uses of USMTGUI Offline

User Profile backup from Windows.Old “Upgrade- Install” folder

If you have made an “Upgrade-Install”, an old installation folder is present. C:\Windows.Old.. In that folder there is a complete copy of your old installation and if you want one or more user profiles from there, you can use USMTGUI Offline, installed with the Pro version side by side to USMTGUI.

NOTE: Since MS Scanstate does not run natively on **XP** and **Vista**, you must use either of the two methods below to backup user profiles from XP and Vista! Annoying but it saves your day. ☺

User Profile Backup off hard disk from old or Dead Pc

By connecting a functioning disk, from an old or dead Pc, to a Pc with USMT Offline installed, you can backup user profiles and then restore to a new Pc with USMTGUI.

User Profile Backup off hard disk with Boot ISO

If you have a Pc where Windows for some reason will no longer boot, but the hardware seems okay, you can even use the downloadable ISO to boot into USMT GUI Offline and rescue your user profiles

Errors

Of course, there are limitations if fx files are corrupted. Typically, a corrupt user profile will **not** be successfully backed up!)

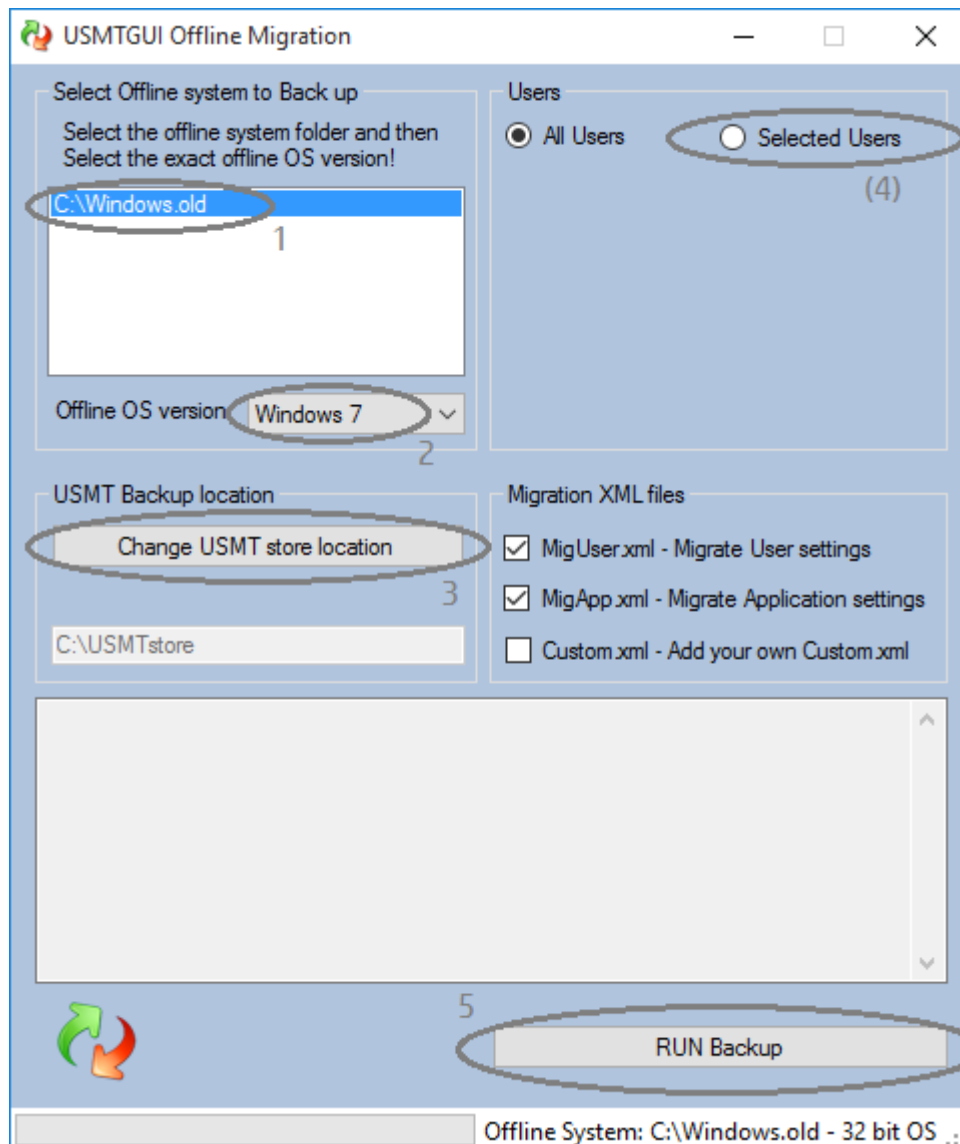
Note: USMTGUI Offline CANNOT migrate user profiles of a running Windows. Use USMTGUI for that!



USMTGUI Offline User Guide

Once you have the USMTGUI Offline interface loaded one way or the other, you simply

1. Select the Windows folder in question
2. Select operating system version.
3. Select where to store the data
4. Optionally, if you want only to backup certain profiles, click “Selected Users” and let USMTGUI Offline detect the user profiles available (typically this takes a few minutes) and select.
5. Press “RUN Backup”



Note: Use **USMTGUI** to restore the users. NOT USMTGUI Offline.



USMTGUI St. Alone Corporate Automatization functionality

The USMTGUI St. Alone Ent.zip file contains a custom version of USMTGUI that can be controlled by a config file. If the config file **USMTGUIAutoSetup.txt** is present, the four top lines will be read, and acted upon.

Thereby anyone can use USMTGUI to make a Profile backup and it is a very swift tool in the everyday work scene for technicians handling many Pc's.

Below is the USMTGUIAutoSetup.txt file with self explanatory comments:

```
-----  
"\\serverFQDN\share\folder\"          < Storagepath  
120                                   < Days since last login  
                                     < Encryption password  
False                                < Start automatically without user intervention  
-----
```

Top Four !! lines of this file will be read.

Line 1 is the preconfigured storage path.

⌘ You can use a hard coded path (eeg "c:\temp\usmttest\") or a Network UNC path eeg

"\\server\share\folder\")

⌘ or use a combination of "%~d0" / "%~dp0" / %Systemdrive% and path.

⌘ %~d0 will substitute with the drive from where USMTGUI is run.

⌘ %~dp0 will substitute with the drive AND path from where USMTGUI is run.

⌘ %Systemdrive%\ will substitute with the drive where windows is installed

⌘ Example where USMTGUI runs from h:\Ehlertech\
⌘ "%~d0\USMTtest\" will store in the folder h:\USMTtest\%Computername%

⌘ "%~dp0\USMTtest\" will store in the folder h:\Ehlertech\USMTtest\%Computername%

⌘ Do NOT add Computername or %Computername% as the GUI does it for you.

⌘ - IF the storage path does not exist the Auto function exits.

⌘ - IF the storage path including %Computername%\mig\ folder does exist,

⌘ the GUI sets up for restore

Line 2 is the 'Number of days since last login'

⌘ - If set to blank all users will be included

⌘ - If set to "0" only currently logged in user(s) will be backed up.

⌘ - If set to 1-999 all users logged in within the timeframe will be backed up

Line 3 is Encryption password

Set to blank or set to any passcode without blanks

Line 4 is autorun True/False and MUST be set to either True or False.



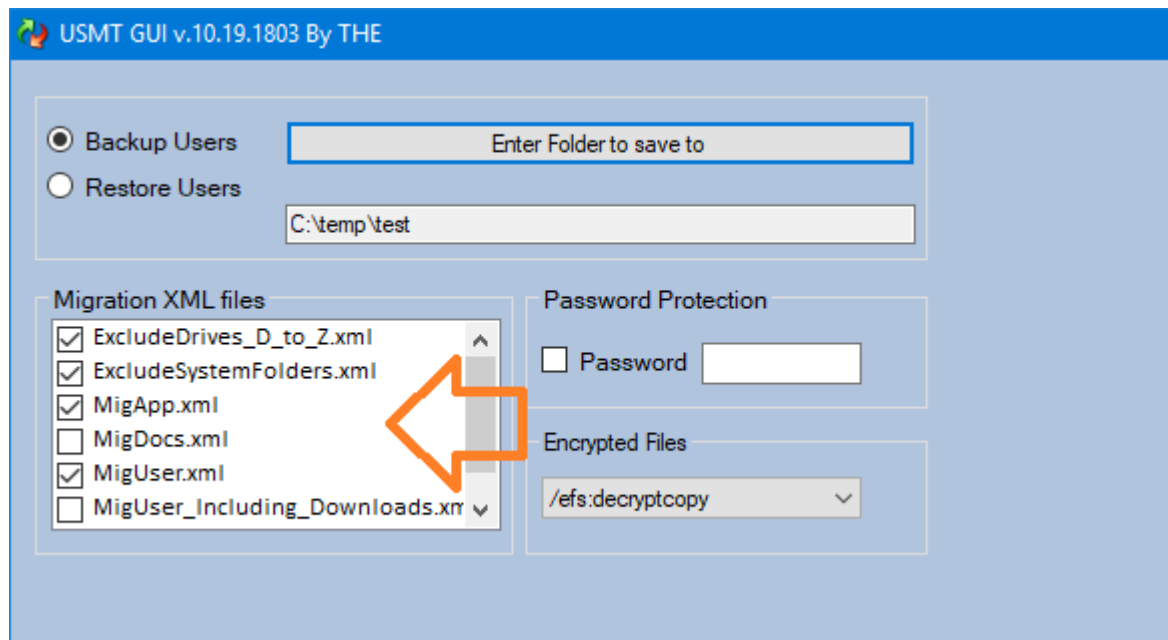
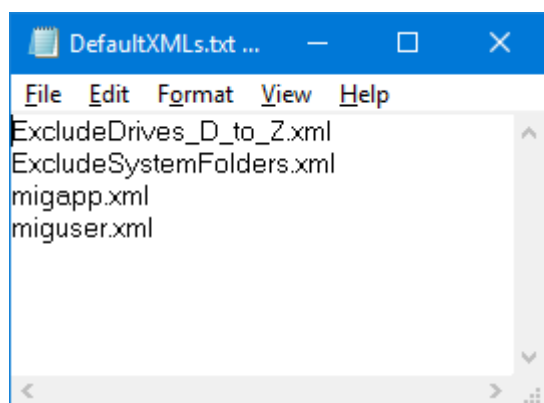
Default selected XML files - USMTGUI St. Alone.exe – and USMTGUI St. Alone.Zip

From USMTGUI v. 10.18.1803 and onwards, multiple XML files are offered from EhlerTech and in the corporate editions of USMTGUI you can even add your own. Just add them to the “USMT_x64_v10” and “USMT_x86_v10” subfolders

Preselected XML's

To facilitate the technicians in everyday use, from USMTGUI v. 11.19.1803 and onwards, you can now preselect what XML files are selected when backing up a user profile, by simply placing a [DefaultXMLs.txt](#) file containing a list of XML's.

These XML's then of course must be present in the “USMT_x64_v10” and “USMT_x86_v10” subfolders.



How To Add XML files or Edit the DefaultXMLs.txt

The USMT GUI 11 St.Alone EntC.exe is actually a self contained wrapper..

Please crack it open with fx WinRAR (Right click, "Open with WinRAR")

Place the [DefaultXMLs.txt](#) in the USMT GUI 11 folder

- Residing there is already a [DefaultXMLs.txt.Demo](#) file..

Add custom XML files to the USMT GUI 11 subfolders “USMT_x64_v10” and “USMT_x86_v10”.



EhlerTech Reference XML files walk through

Short descriptions of each xml file

In the following is a brief description of each XML file. Please do use Notepad++ or the like to edit XML files..

To see in detail how to utilize the different XML files, please see the

[EhlerTech XML detailed descriptions guide](#)

Config.xml

Config.xml can be generated with Scanstate (Or by the USMTGUI “Generate New Config.xml” feature).

- Config.xml is a simplified way of excluding application settings, Windows components or document folders.

ExcludeDrives_D_to_Z.xml

Excludes files from all other drives than C: - The file is a simple xml list and easy to edit.

ExcludeOneDriveUserFolders.xml

If you’re redirecting document folders to OneDrive or a local server, use this file to exclude these folders.

- Simple XML file, easily editable to control what document folders are migrated.

- You can get the same functionality through Config.xml

ExcludeSystemFolders.xml

Excludes C:Windows, Program Files, Programdata etc. as many irrelevant files hide there.

- Simple XML file, easily editable to control what system folders are excluded.

- Note: Especially recommended along with MigDocs.

MigApp.xml

Migrates settings for a long list of Applications including Office, Firefox and Chrome.

- Advanced XML file capable of cross-referencing Office versions.

- Modified by EhlerTech to correctly migrate Chrome and Firefox favorites

MigAppO2019.xml - As above but Modified by EhlerTech to correctly migrate Office 2019

MigDocs.xml

Migrates the user profile as does MigUser.xml. However, MigDocs.xml also scans all folders on all local drives, for ALL KNOWN file types as per [file types registered in the local system](#).

- Generates bigger more complete backups, but also containing more irrelevant files.

- Consider using *ExcludeSystemFolders.xml* along with MigDocs.xml

MigUser.xml

MigUser.xml migrates the user profile and scans all folders on all local drives, for a selected list of file types.

- List of file types is near the bottom of the MigUser.XML file along with a location modify option

MigUser_Including_Downloads.xml – As above including the users Downloads folder.

Win10.xml – Windows 10 settings explicitly. Also adds USMTAfterburner to the migrated users Desktop

Win7and8toWin10StickyNotes.xml – discovers and migrates StickyNotes, old and new version.

Detailed description of each XML file and (some) modifications that can be made: [see separate guide](#)